

Adjusting Cache Settings

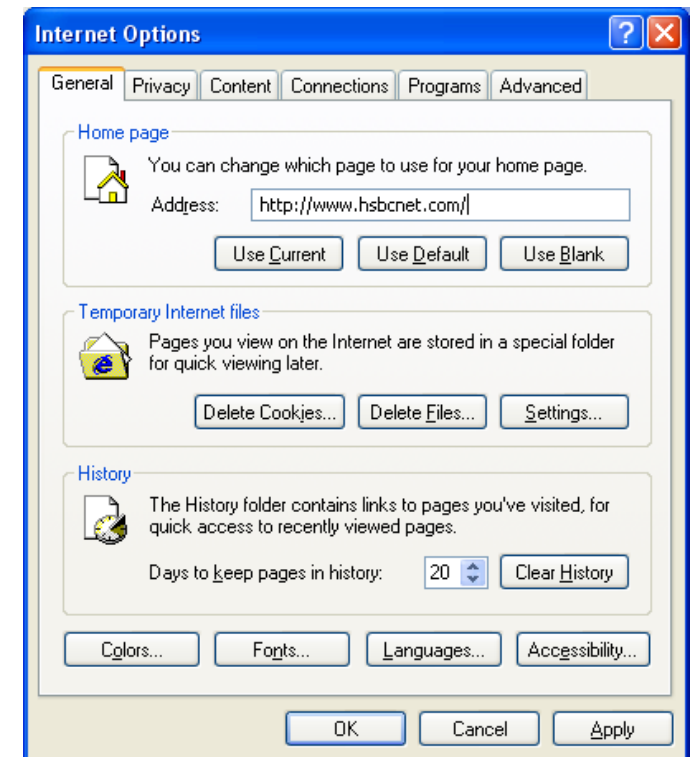
Adjusting cache settings

The performance of complex Web applications such as HSBC*net* can be affected by the specific settings of your browser.

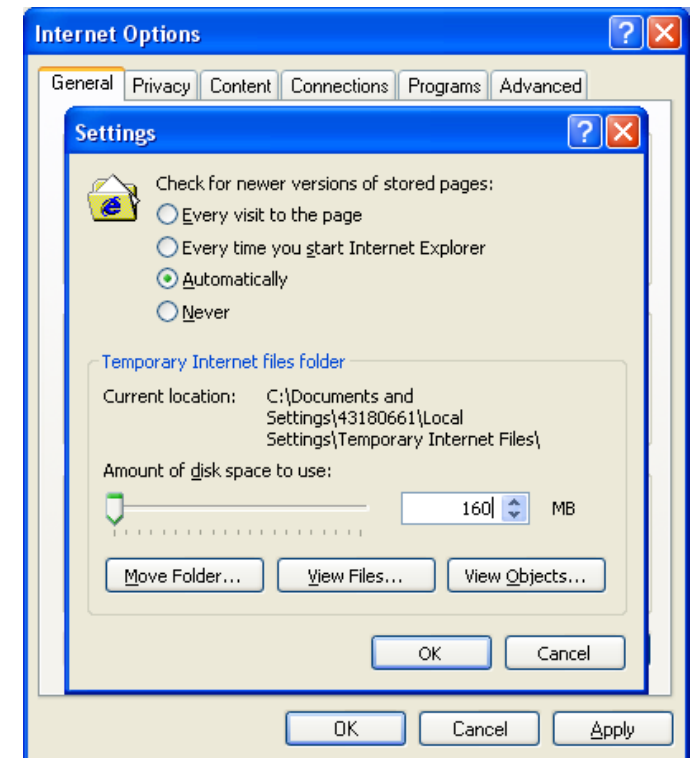
In order to maximise the performance of HSBC*net*, we recommend the following settings in Internet Explorer 6.0:

Disable checking for newer version of pages

1. In your browser select 'Internet Options' from the **Tools** menu. Internet Explorer will display the 'Internet Options' dialogue box.
2. Select the **General** tab and then click on the **Settings** button in the 'Temporary Internet Files' section; Internet Explorer will display the 'Settings' dialogue box.

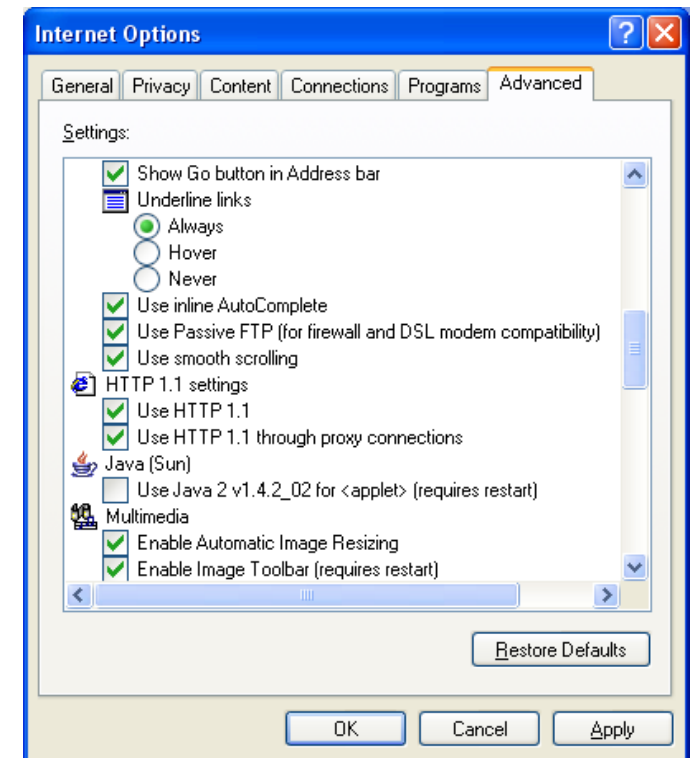


3. Under the 'Check for newer versions of stored pages' prompt, select the 'Automatically' option. This option should not affect the browsing of other sites.
4. Click on **OK** to close the 'Settings' dialogue box. You will return to the 'Internet Options' dialogue box.
5. Click on **OK** to close the 'Internet Options' dialogue box.



Enable caching of encrypted Web content

1. In your browser select 'Internet Options' from the **Tools** menu. Internet Explorer will display the 'Internet Options' dialogue box.
2. Select the **Advanced** tab in the dialogue box and then scroll down to the 'HTTP 1.1 settings' section and make sure both options are selected.



3. Scroll down to the 'Security' section and make sure the 'Do not save encrypted pages to disk' and 'Empty Temporary Internet Files folder when browser is closed' options are not selected.
4. Click on the **OK** button to close the 'Internet Options' dialogue box.

Before making these changes, you should check with your IT support staff to ensure that these settings are consistent with your internal security policies.

